

Specialist School Group Mural Project

Project:

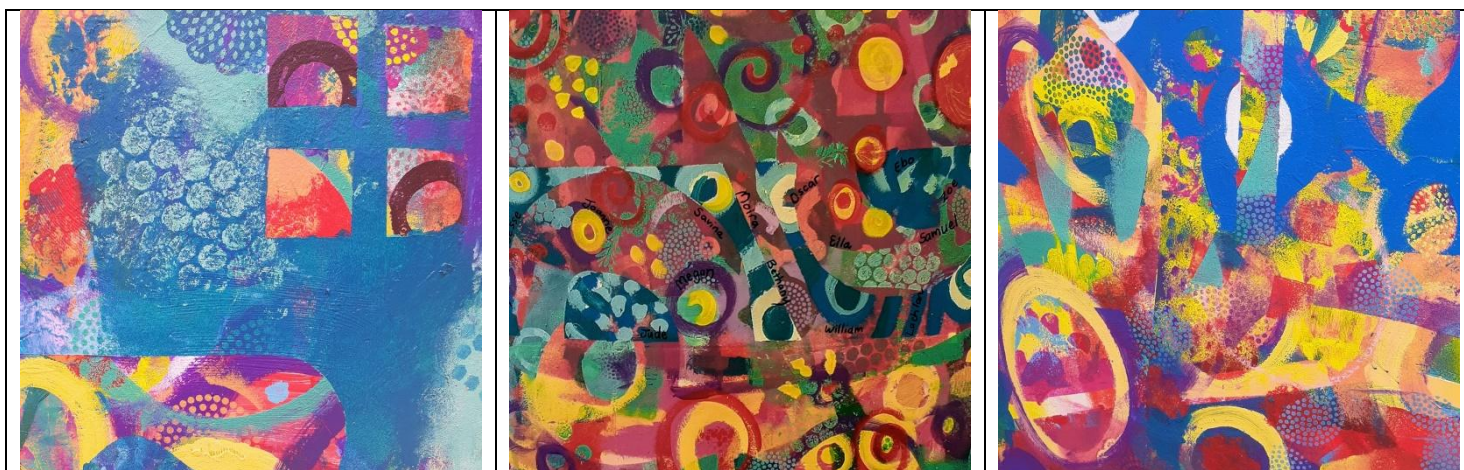
To create a whole-school collaborative mural on the large pipe structure in the Sensory Garden at Suneden Specialist School, involving students across all classes.

Process:

Over two sessions per class, 68 students aged 5–21 from 9 classes participated in the mural. Supported by school staff, each group contributed directly to the evolving artwork.

A wide range of tools was used, including rollers, sponges, stamps, brushes, sgraffito sticks, stencils, templates, and long-handled brushes. The mural was built in layered stages using alternating cool and warm colour palettes, allowing students to explore texture, movement, and mark-making in different ways.

Every participant contributed in their own way, with staff also joining in to support and extend the collaborative process. A total of 100 staff and students (plus me) painted it.



Using lots of layers gives so much visual depth and many eyecatching areas to explore visually...



Results:

A large-scale sensory garden mural was created, featuring layered contributions from students and staff across the entire school community.

The finished artwork reflects many individual marks coming together into one unified piece, now forming a permanent visual feature within the school environment. Every student's name is included within the mural design for discovery and recognition.

The Project was a success!

Painting Around is Fun!

Inclusive Collaborative Art with Charndra

www.PaintingAroundisFun.com

[Painting Around Adelaide on Facebook](#)